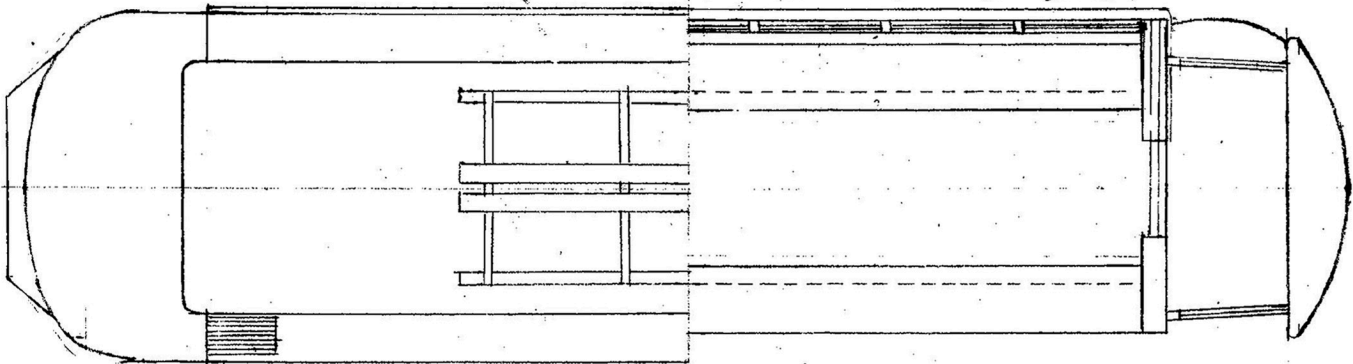
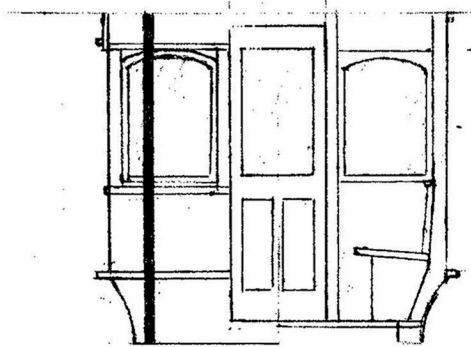


FLOOR PLAN AT WINDOW BOTTOM



ROOF

FLOOR AT FLOOR LINE



END

AT  
END  
OF  
BODY

AT  
CENTER  
OF  
CAR

BOSTON ELEVATED RAILWAY

20 FT. BOX CAR

SCALE  $\frac{1}{4}'' = 1'$

DRAWN 6/10/50

By Arthur Darnicean

BRILL 21-E TRUCK

36" WHEELS

NOTE: - CARS HAD 30" WHEELS

ADD 3" STRINGER BETWEEN

BODY AND TRUCK

